

Public Document Pack

North and East Plans Panel

Thursday, 28th March 2024

PowerPoint Presentation

This page is intentionally left blank

NORTH & EAST PLANS PANEL

Thursday, 28TH March 2024

Page 3

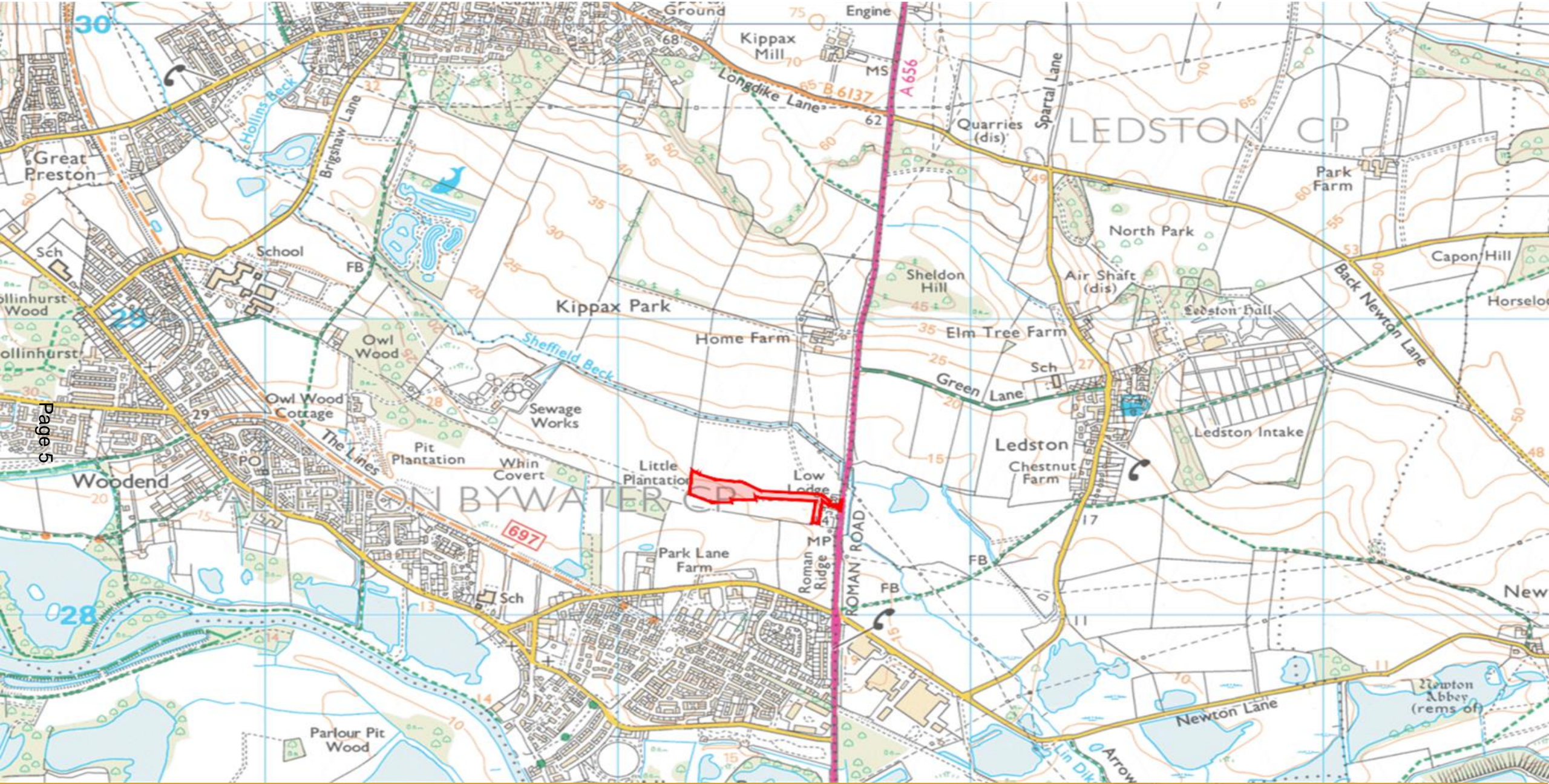


APPLICATION:23/03233/FU

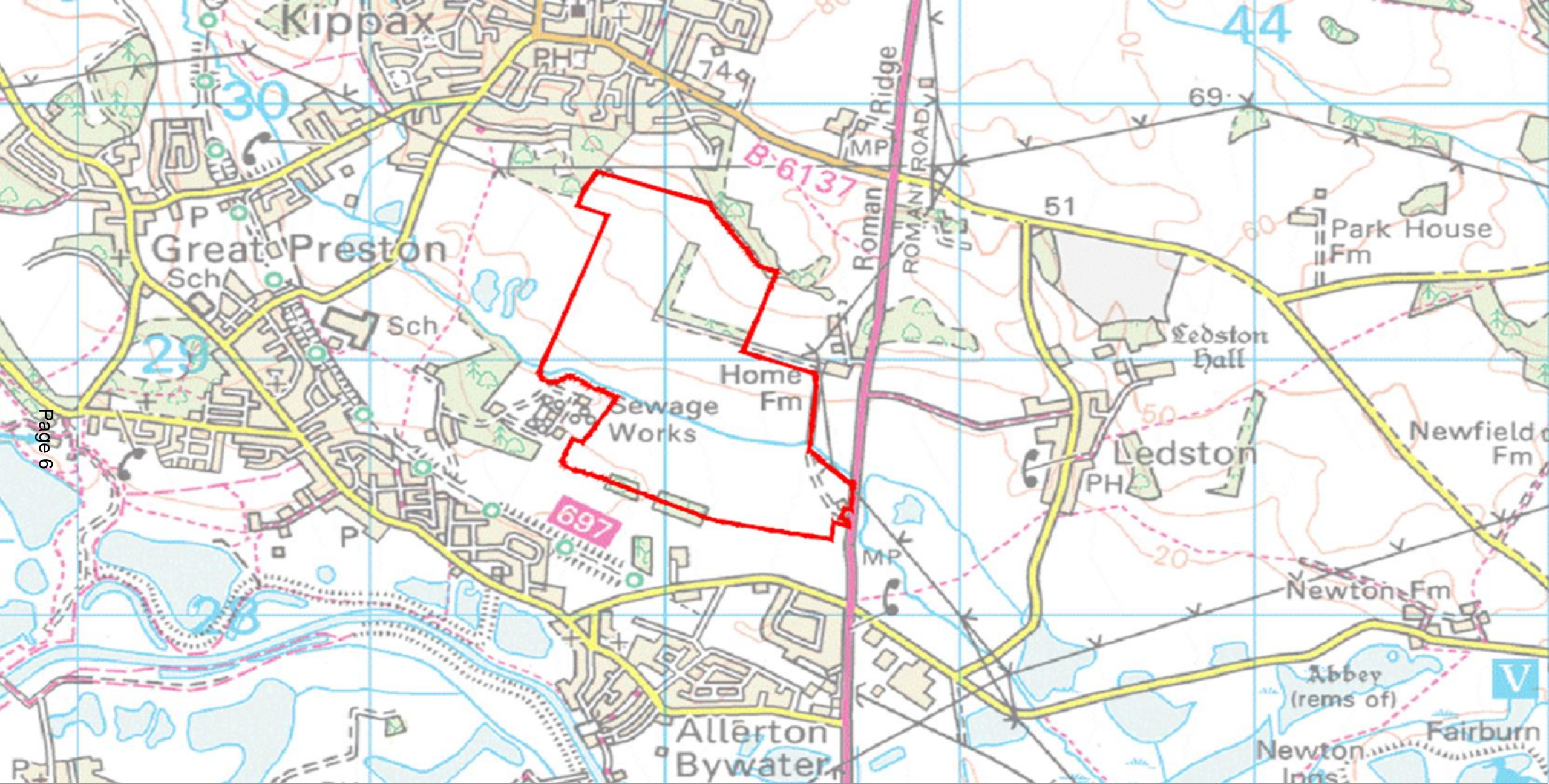
PROPOSAL: Installation and operation of a Battery Energy Storage System and associated infrastructure

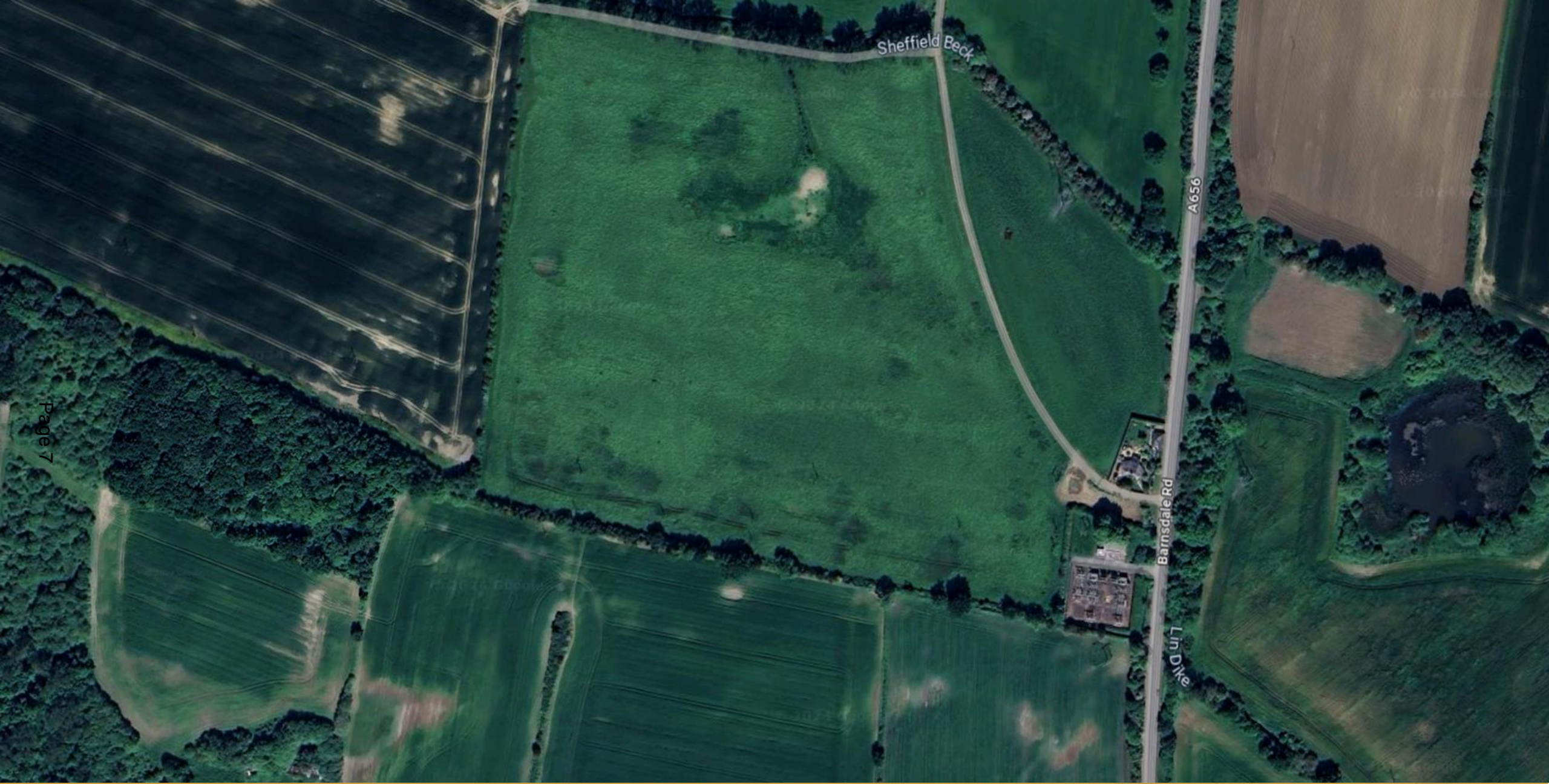
ADDRESS: Land To The North Of Allerton Bywater, To The West Of The A656 Barnsdale Road, South Of Kippax





Page 5



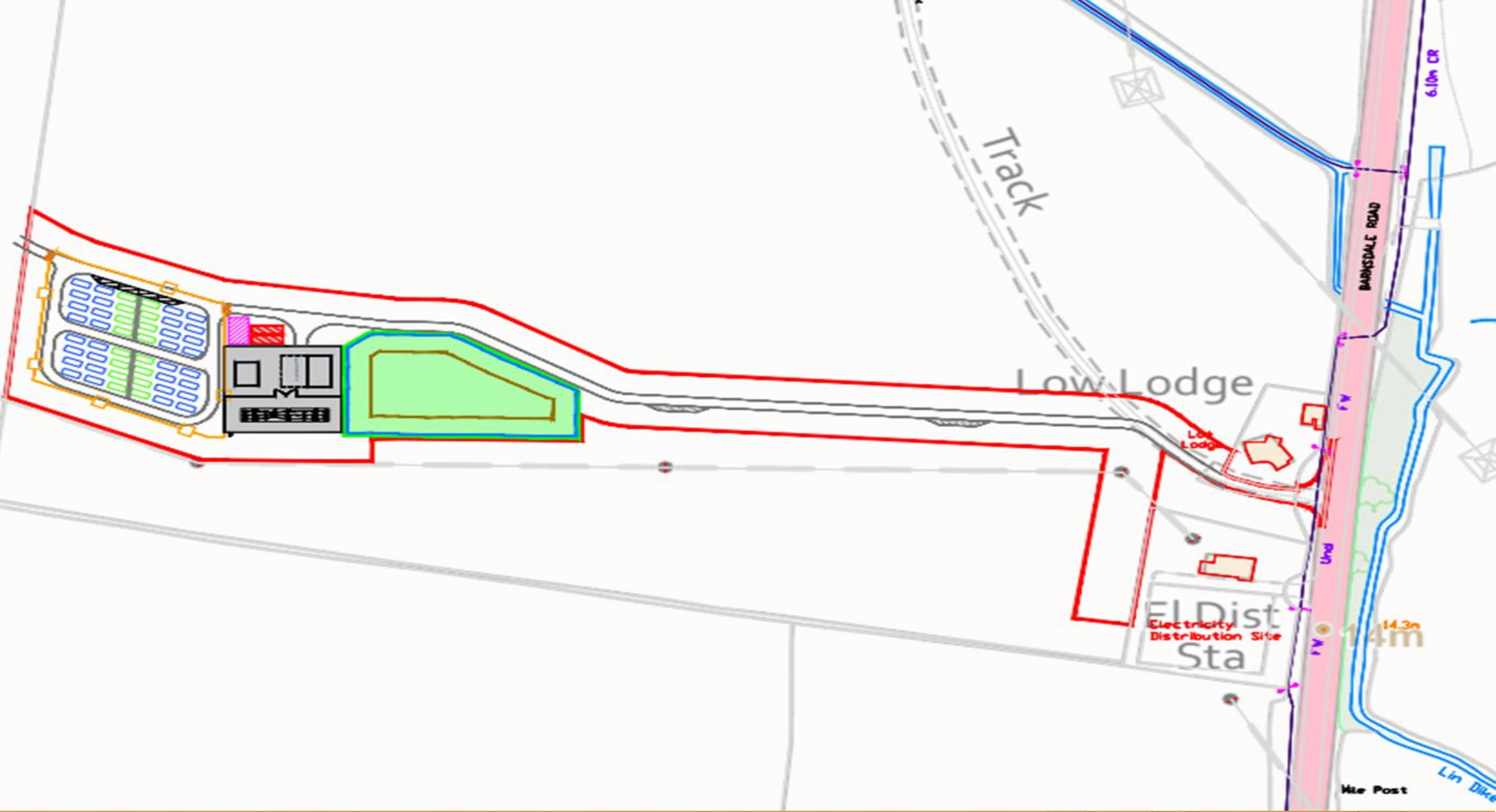




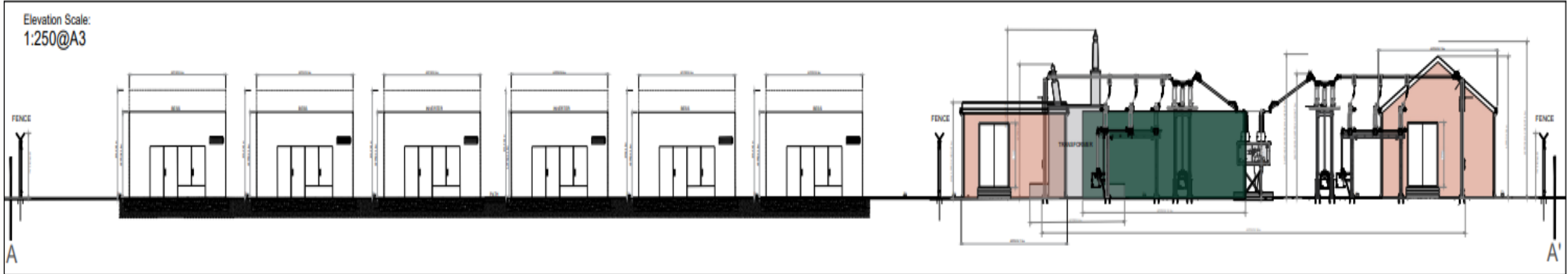


Page 9

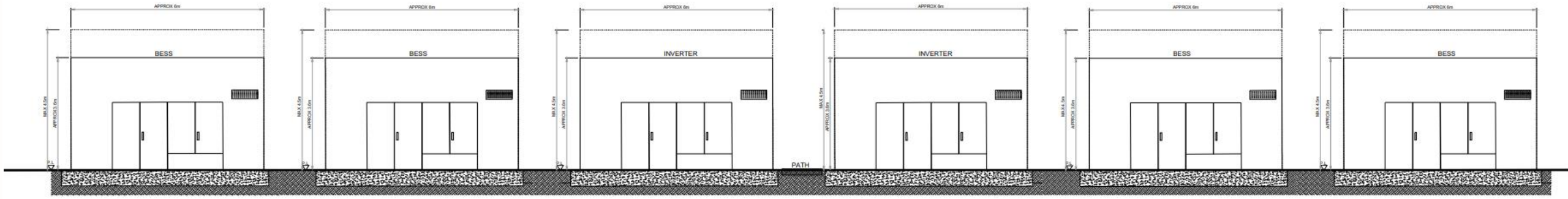


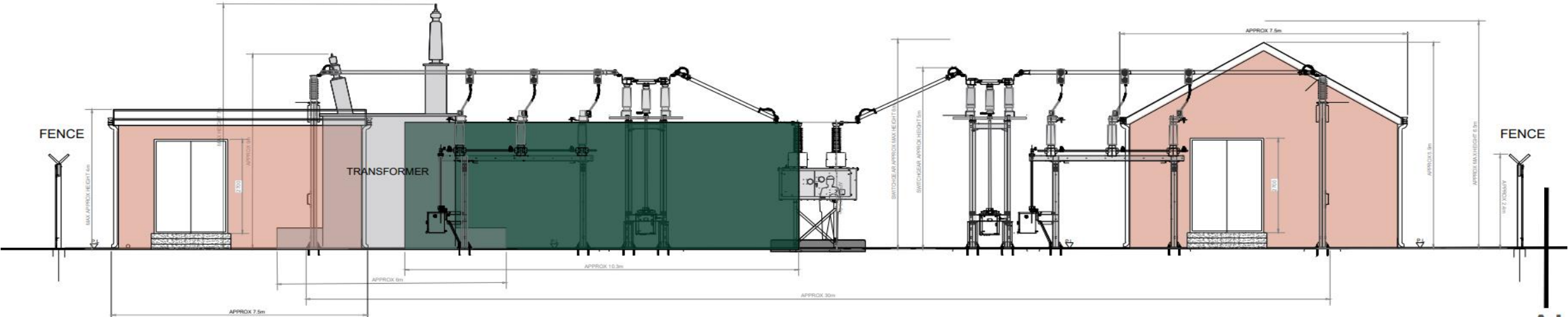


Elevation Scale:
1:250@A3

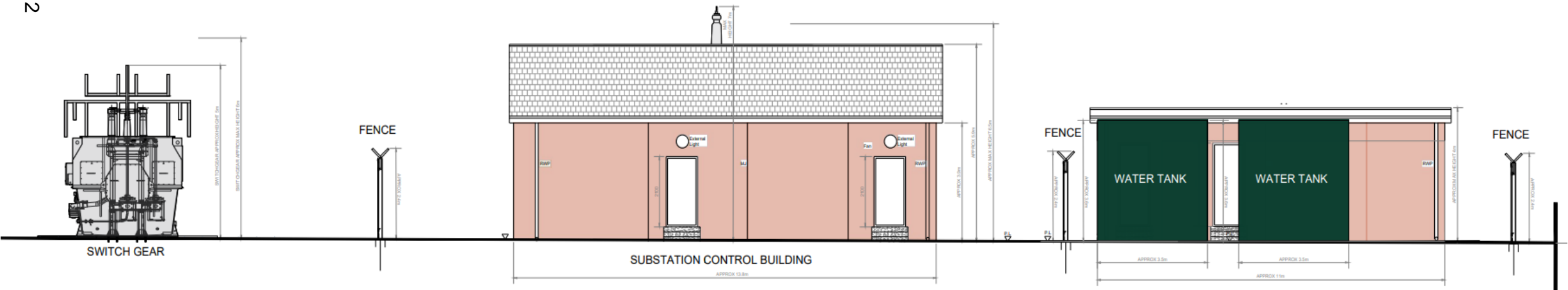


Page 11

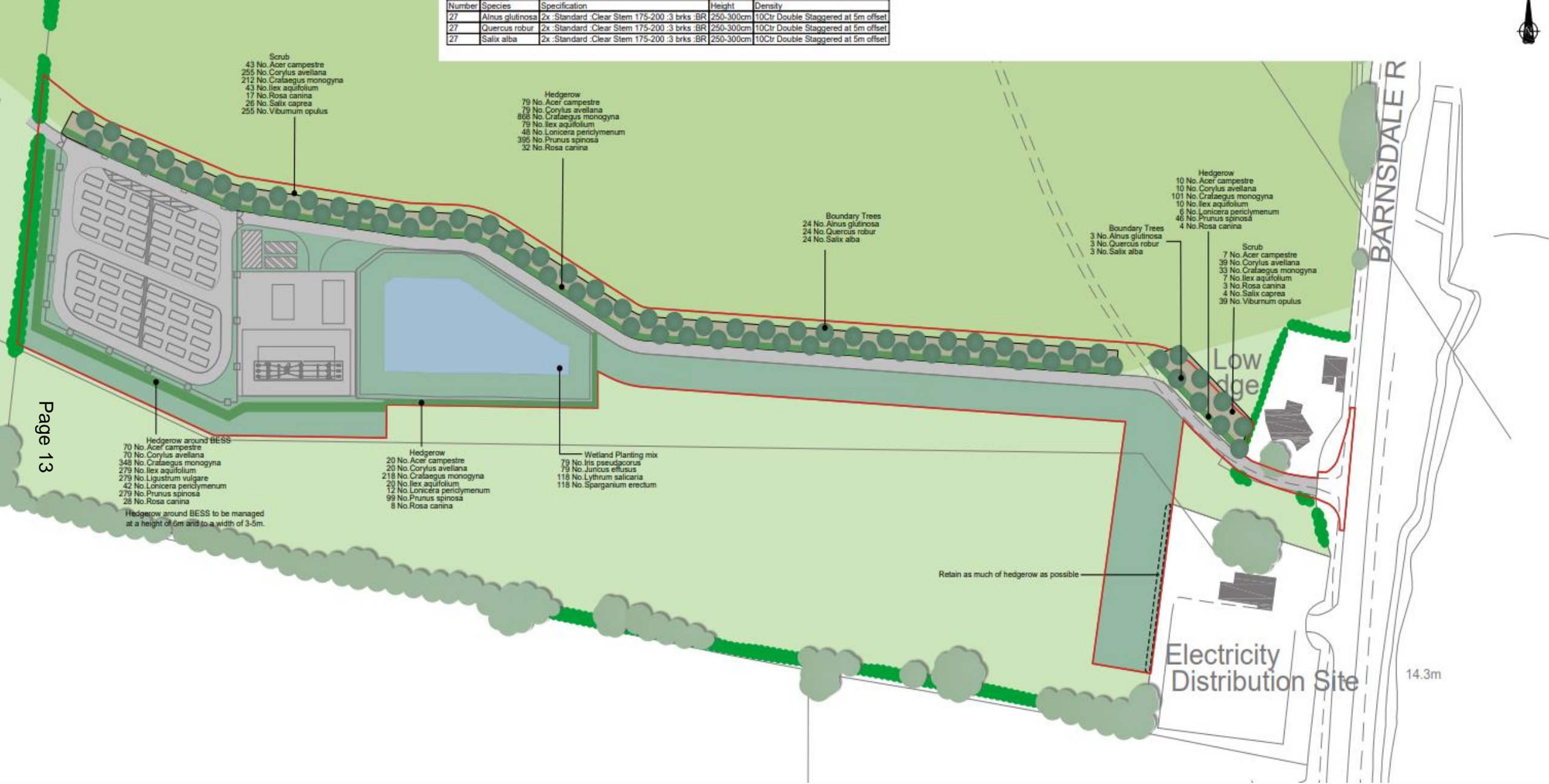




Page 12



Number	Species	Specification	Height	Density
27	<i>Alnus glutinosa</i>	2x :Standard :Clear Stem 175-200 :3 brks :BR	250-300cm	10Ctr Double Staggered at 5m offset
27	<i>Quercus robur</i>	2x :Standard :Clear Stem 175-200 :3 brks :BR	250-300cm	10Ctr Double Staggered at 5m offset
27	<i>Salix alba</i>	2x :Standard :Clear Stem 175-200 :3 brks :BR	250-300cm	10Ctr Double Staggered at 5m offset



- Scrub
- 43 No. *Acer campestre*
 - 255 No. *Corylus avellana*
 - 212 No. *Crataegus monogyna*
 - 43 No. *Ilex aquifolium*
 - 17 No. *Rosa canina*
 - 26 No. *Salix caprea*
 - 255 No. *Viburnum opulus*

- Hedgerow
- 79 No. *Acer campestre*
 - 79 No. *Corylus avellana*
 - 805 No. *Crataegus monogyna*
 - 79 No. *Ilex aquifolium*
 - 48 No. *Lonicera periclymenum*
 - 395 No. *Prunus spinosa*
 - 32 No. *Rosa canina*

- Boundary Trees
- 24 No. *Alnus glutinosa*
 - 24 No. *Quercus robur*
 - 24 No. *Salix alba*

- Boundary Trees
- 3 No. *Alnus glutinosa*
 - 3 No. *Quercus robur*
 - 3 No. *Salix alba*

- Hedgerow
- 10 No. *Acer campestre*
 - 10 No. *Corylus avellana*
 - 101 No. *Crataegus monogyna*
 - 10 No. *Ilex aquifolium*
 - 6 No. *Lonicera periclymenum*
 - 46 No. *Prunus spinosa*
 - 4 No. *Rosa canina*

- Scrub
- 7 No. *Acer campestre*
 - 39 No. *Corylus avellana*
 - 33 No. *Crataegus monogyna*
 - 7 No. *Ilex aquifolium*
 - 3 No. *Rosa canina*
 - 4 No. *Salix caprea*
 - 39 No. *Viburnum opulus*

- Hedgerow around BES
- 70 No. *Acer campestre*
 - 70 No. *Corylus avellana*
 - 348 No. *Crataegus monogyna*
 - 279 No. *Ilex aquifolium*
 - 279 No. *Ligustrum vulgare*
 - 42 No. *Lonicera periclymenum*
 - 279 No. *Prunus spinosa*
 - 26 No. *Rosa canina*

Hedgerow around BES to be managed at a height of 6m and to a width of 3-5m.

- Hedgerow
- 20 No. *Acer campestre*
 - 20 No. *Corylus avellana*
 - 218 No. *Crataegus monogyna*
 - 20 No. *Ilex aquifolium*
 - 12 No. *Lonicera periclymenum*
 - 99 No. *Prunus spinosa*
 - 8 No. *Rosa canina*

- Wetland Planting mix
- 79 No. *Iris pseudocorus*
 - 79 No. *Juncus effusus*
 - 118 No. *Lythrum salicaria*
 - 118 No. *Sparganium erectum*

Retain as much of hedgerow as possible

Electricity Distribution Site

14.3m

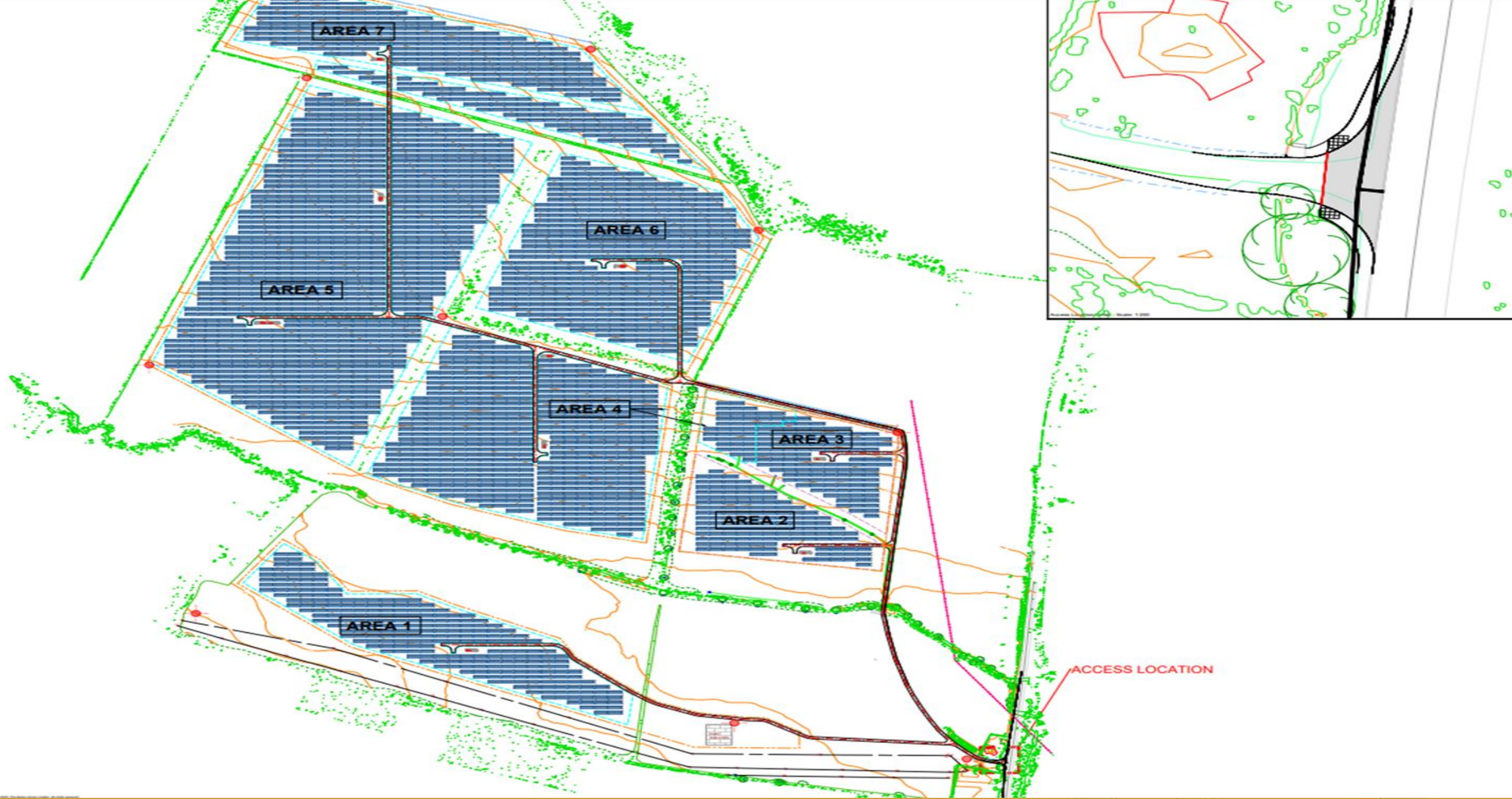


Substation switchgear
Substation control room
BESS control room
Water tank
Battery units

10° 15° 20° 25° 30° 35° 40° 45° 50° 55° 60° 65° 70° 75° 80° 85°

Page 14





NORTH & EAST PLANS PANEL

Thursday, 28TH March 2024

END OF PRESENTATION

Page 16

